



BRIARPOINTE VETERINARY CLINIC

47330 Ten Mile Road
Novi, MI 48374
(248) 449-7447

Ronald A. Studer, D.V.M., L.P.C. John S. Parker, D.V.M.

CRUCIATE LIGAMENT RUPTURE

The knee joint of the cat is one of the weakest in the body. Just as football players frequently suffer knee injuries, the cat also can have knee injuries. The knee joint is relatively unstable because there is no interlocking of bones in the joint. Instead, the two main bones, the femur and tibia, are joined with several ligaments. When severe twisting of the joint occurs, the most common injury is a rupture of the anterior or cranial cruciate ligament. When it is torn, instability occurs that allows the bones to move in an abnormal fashion in relation to each other. It is difficult for the cat to bear weight on the leg without it collapsing.

How is a cranial cruciate ligament rupture diagnosed?

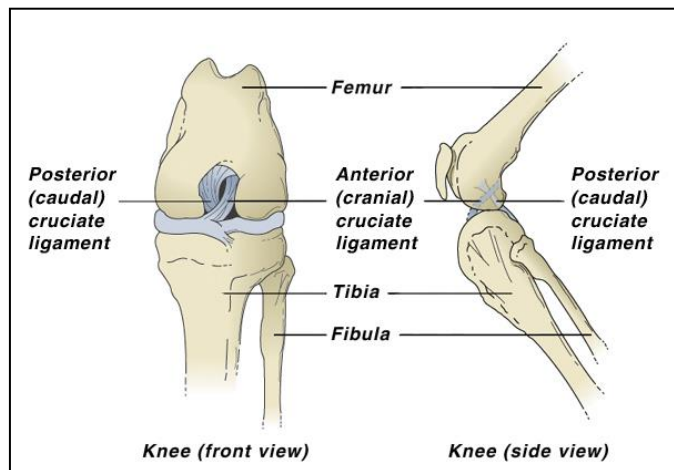
The most reliable means of diagnosing this injury is to move the femur and tibia in a certain way to demonstrate the instability. This movement is called a "drawer sign." It can usually be demonstrated with the cat awake. If the cat is in pain, has very strong leg muscles, or is uncooperative, it may be necessary to use sedation in order to examine the joint thoroughly.

How is it treated?

Correction of this problem often requires surgery. We can perform surgery to fashion a replacement ligament and stabilize the joint so it functions normally or nearly normally. Some cats will heal without surgery but most cats will eventually develop severe arthritis as a result of the injury.

What about torn cartilage?

Occasionally the injury that causes also results in tearing of one or both of the *menisci* or *cartilages*. These menisci are cartilage pads or "shock absorbers" between the two bones in the knee joint, the femur and tibia. At the time of surgery, these are examined and removed if necessary.



Is there any non-surgical treatment?

Occasionally, the cat that has a ruptured cruciate ligament will improve even if surgery is not performed. However, arthritis will usually begin and many cats become lame a few months later.

Cosequin® (Glucosamine and Chondroitin Sulfate) can be useful in combination with surgery or with cases that do not require surgery.

Does obesity play a role in this condition?

A special note is appropriate concerning the cat's weight. Obesity or excessive weight can be a strong contributing factor in cruciate rupture. The ligament may become weakened due to carrying too much weight, causing it to tear easily. Obesity will make the recovery time much longer, and it will make the other knee very susceptible to cruciate rupture. If your cat has a weight problem, there are restricted calorie diets that can be used to assist weight reduction.

Edited by John S. Parker, DVM
© Copyright 2005 Lifelearn Inc. Used with permission under license. April 7, 2017