



## **BRIARPOINTE VETERINARY CLINIC**

47330 Ten Mile Road  
Novi, MI 48374  
(248) 449-7447

Ronald A. Studer, D.V.M., L.P.C.    John S. Parker, D.V.M.

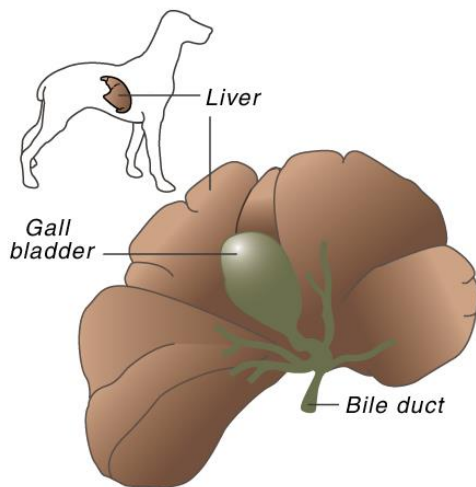
### **ICTERUS IN DOGS**

#### ***What is icterus?***

Icterus is also known as jaundice or yellow jaundice. It means that a yellow pigment is found in the blood and tissues. It is most easily seen in the gingivae (gums), the sclerae (white part of the eyes), and the pinnae (ear flaps). If these tissues normally have a dark color, icterus will be difficult to see in these dogs.

#### ***What causes icterus?***

The causes of icterus fall into three major categories:



**Destruction of red blood cells.** The process of red cell destruction is known as *hemolysis*. It can occur within blood vessels (*intravascular hemolysis*) or in the spleen and liver (*extravascular hemolysis*).

**Liver disease.** Any disease that causes destruction of liver cells or causes bile to become trapped in the liver can cause icterus.

**Obstruction of the bile duct.** The bile duct carries bile, an important fluid for digestion, from the gall bladder to the small intestine. Obstruction can occur within the gall bladder or anywhere along the bile duct.

#### ***How is the cause of icterus determined?***

Within each category listed above are several possible causes. Determining the exact cause of icterus requires a series of tests. Some of these tests determine which category is involved. Once that is known, other tests are done to look for a specific disease that is leading to the icteric state.

#### ***What tests determine hemolysis?***

Since hemolysis results in red blood cell destruction, determination of red blood cell numbers is one of the first tests performed on the icteric patient. There are three tests that may be used for this. The **red blood cell count** is an actual machine count of red blood cells. The **packed cell volume (PCV)** is a centrifuge-performed test that separates the red blood cells from the serum or plasma (the liquid parts of the blood). The **hematocrit** is another way to determine if there is

a reduced number of red blood cells. All three of these tests are part of a complete blood count (CBC).

### ***What causes hemolysis?***

Hemolysis can be caused by toxic plants, drugs, parasites on the red blood cells, heartworm disease, autoimmune diseases, and cancer. Several tests are needed to determine the cause of hemolysis in your pet.

### ***What tests are used to diagnose liver disease?***

A biochemistry profile is performed on dogs with icterus. This is a group of tests that is performed on a blood sample. The biochemistry profile contains several tests that are specific for liver disease. The main ones are the alanine aminotransferase (ALT), aspartate aminotransferase (AST), alkaline phosphatase (ALP or ALKP), and total bilirubin. If these tests are suspicious of liver disease, a bile acid analysis is usually performed.

Although each of these tests evaluates the liver, they only determine if liver disease is occurring. None of them are able to determine the exact cause of the disease. To make that determination, a biopsy of the liver is necessary. This can be done in three ways.



**Fine-needle aspirate.** To perform this procedure, a small gauge needle is inserted through the skin into the liver. A syringe is used to aspirate some cells from the liver. The cells are placed on a glass slide, stained, and studied under a microscope. This is the least invasive and quickest test, but it has certain limitations. Because only a few cells are obtained, it is possible that a representative sample from the liver will not be obtained. It is also not possible to view the cells in their normal relationship to each other (i.e., tissue architecture). Some diseases can be diagnosed with this technique and others cannot. In addition, there is some risk of blindly aspirating the liver.

**Ultrasound-guided Needle biopsy.** This procedure is similar to the fine-needle aspirate except a much larger needle is used. This needle is able to obtain a core of tissue, not just a few cells. The sample is fixed in formaldehyde and submitted to a pathologist for analysis. General anesthesia is required, but the dog is anesthetized for only a very short period of time. Done properly, this test can provide valuable insight into the cause of liver disease and icterus. In addition, the ultrasound can provide information about the inside of the liver and see masses and nodules that may or may not be seen on an X-ray.

**Endoscopic biopsy.** The dog is placed under general anesthesia, and 2-3 very small incisions are made through the abdomen. This permits direct observation of the liver so the exact site for biopsy can be chosen. A piece of the liver is surgically removed using a biopsy instrument. This approach gives the most reliable biopsy sample.

### ***What causes liver disease?***

The most common causes of liver disease include bacterial infections, viral infections, toxic plants, chemicals, drugs, cancer, autoimmune diseases, and certain breed-specific liver diseases.

### ***What tests determine bile duct obstruction?***

Dogs with obstructed bile ducts are usually extremely icteric. Their yellow color can often be seen readily in the skin, as well as the sclerae and gingivae. However, an evaluation of the gall bladder and bile duct is necessary to be sure that obstruction is present.

An ultrasound examination is the most accurate non-invasive way to evaluate the gall bladder and bile duct. This technology uses sound waves to “look” at the liver, gall bladder, and bile duct. If this is not available, radiographs (x-rays) should be taken of the liver. However, sometimes exploratory surgery is necessary to properly evaluate the dog for biliary obstruction.

### ***What causes bile duct obstruction?***

The most common causes of bile duct obstruction include pancreatitis, trauma, cancer, gall bladder stones, severely thickened bile and infection.

### ***How is icterus treated?***

Icterus is not a disease; it is a sign that disease is present. Therefore, there is not a specific treatment for icterus. Icterus will resolve when the disease that causes it is cured.

The basis for resolving icterus is to diagnose the underlying disease. When the proper testing is done, this is usually possible. Treatment can begin as soon as a diagnosis is obtained.